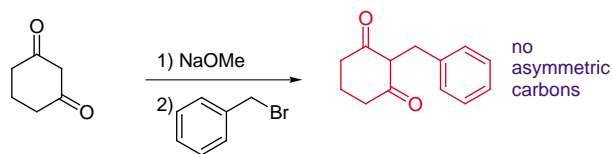
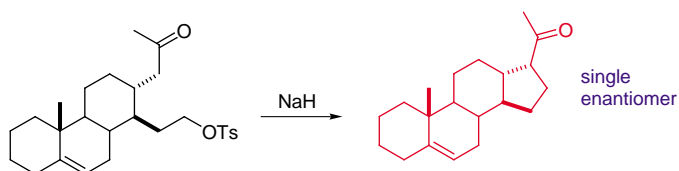
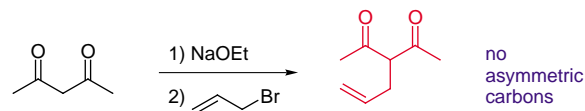
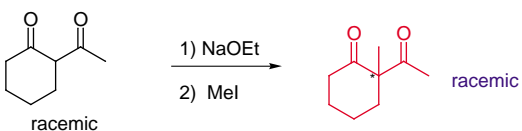
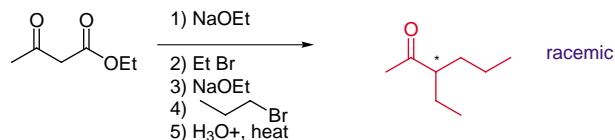
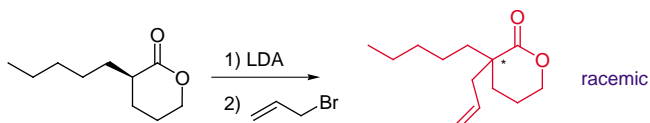
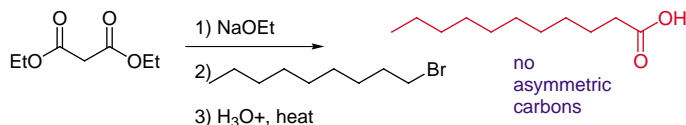
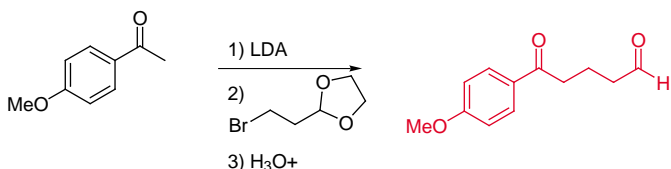
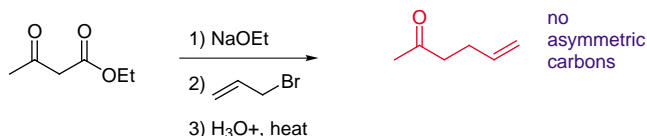
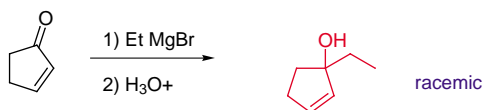
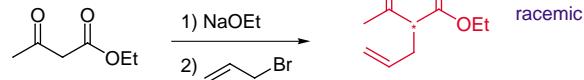
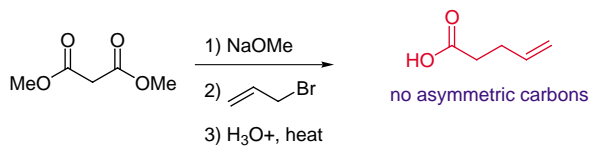
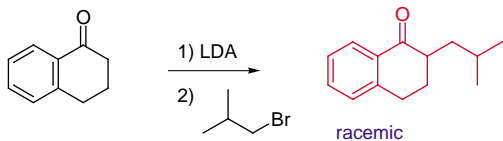
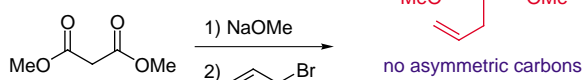
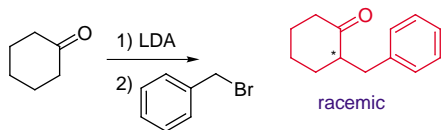
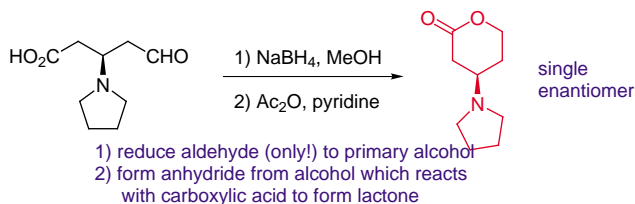
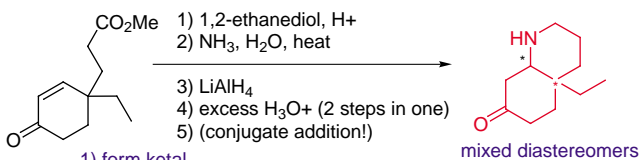
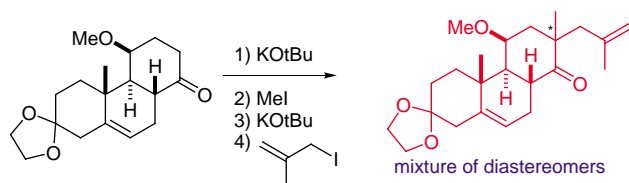
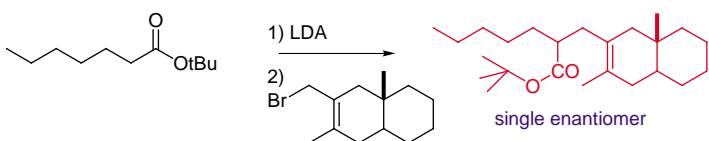


Chem 212
Enolate Problem Set ANSWERS

Provide the products for the following reactions.



5-membered rings form faster than 7-membered ones



- 1) form ketal
- 2) ester to amide
- 3) reduce amide to primary amine
- 4) neutralize LiAlH₄ reaction AND cleave ketal
- 5) amine does conjugate addition

- 1) reduce aldehyde (only!) to primary alcohol
- 2) form anhydride from alcohol which reacts with carboxylic acid to form lactone